

Application Notes

Cleaners - Credit Card Manufacturing



Industry	Problem	Solution	Result
<p data-bbox="131 415 464 489">Credit Card Manufacturing</p> <p data-bbox="131 562 464 598">Application</p> <p data-bbox="131 636 464 814">Web cleaning to remove fine particles from the base film before laminating process.</p>	<p data-bbox="472 415 802 558">Surface contamination causes a myriad of problems for card manufacturers.</p> <p data-bbox="472 600 802 1289">Even very small particles, less than 10 micron, can create air pockets – “bubbles” – within the laminated card structures that cause visual defects, or structure rejects. Many of the cards produced today are used as membership/ID cards, grocery stores, as an example, with thin profiles. The films used in this process generate static charges easily, and become magnets for air born particulate.</p> <p data-bbox="472 1331 802 1692">There are print applications on completed cards, to add various pieces of information that are impacted by surface dust and static charge. Cleaning stations are common prior to print operations.</p>	<p data-bbox="810 415 1140 594">Two solutions exist, depending upon the level of cleanliness that the customer is trying to achieve.</p> <p data-bbox="810 636 1140 852">For visual contamination, the vacuum systems are still the most cost effective, Neutro-Vac, or Ion-O-Vac.</p> <p data-bbox="810 894 1140 1220">For fine particle removal, single digit micron level, the HexClean is the most effective. They can also be used in conjunction with a vacuum system, where necessary.</p>	<p data-bbox="1148 415 1476 527">Reject rates will decrease dramatically, at least 50% or more.</p> <p data-bbox="1148 569 1476 680">Downtime for cleaning will also be reduced significantly.</p> <p data-bbox="1148 722 1476 921">In most cases, the system will pay for itself in less than 6 months – that is a return on investment of over 100%.</p>

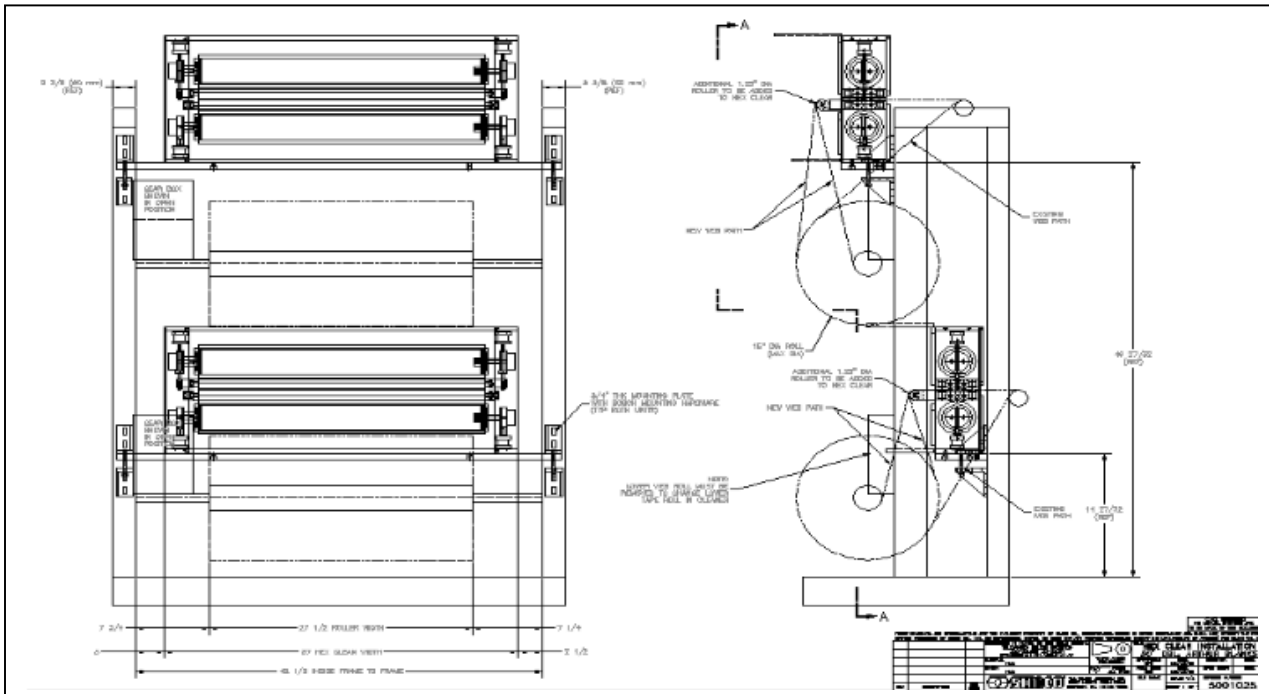
Application Notes

Cleaners - Credit Card Manufacturing



Vacuum System:

Custom designed vacuum hoods for application at Schlumberger facility. The individual cards are processed under hoods, for cleaning, at several production stations.



HexClean, contact cleaner: This system was custom designed for installation on a Louda Systems-Laminator. This application included two HexClean units mounted outside the laminator to clean the base films before they entered the machine.